

## Sheave with Bronze Bushing, Rigging

---

### Product information



Self-lubricating cast sheaves are often applied in lifting, luffing and wire rope routing with intensive operating cycles. The groove opening angle was carefully designed to reduce potential twist resulting from fleet angles. In combination with the self-lubricating effect, the wire rope in your system will last longer. The latter was proved in recent research, in which several sheave materials were compared in terms of their effect on rope twist.

- Different shaft sizes possible.
- Groove may be adjusted to other wire rope diameters.

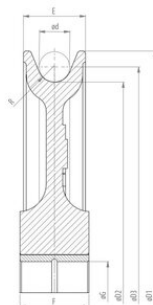
[... Read more](#)

---

**Material:** Cast steel GGG-60, GGG-70, GS20Mn5 or GS30Mn5 depending on model

## Sheave with Bronze Bushing, Rigging

### Blueprint



### Technical data

Part code	Rope Ø range mm	Bearing	Shaft Ø mm	Groove radius	Sheave dia. mm	Ø D1 mm mm	Ø D2 mm mm	Ø D3 mm mm	Ø G mm mm	E mm	F mm	Rmm mm	Ø d mm mm	Weight kg
SEF.80.15.20.4,5	8	Bronze bearing	15	4.5	100 / 80	100	80	88	15	18	20	4.5	8	0.6
SEF.105.22.27.5,5	10	Bronze bearing	22	5.5	125 / 105	125	105	115	22	23	27	5.5	10	1.5
SEF.120.30.40.6,5	12	Bronze bearing	30	6.5	150 / 120	150	120	132	30	36	40	6.5	12	3
SEF.305.50.50.12	12	Bronze bearing	50	12	350 / 305	350	305	327	50	45	50	12	22	13.9
SEF.165.30.40.7,5	14	Bronze bearing	30	7.5	250 / 165	200	165	179	30	36	40	7.5	14	4.5
SEF.250.50.60.8,5	16	Bronze bearing	50	8.5	300 / 250	300	250	266	50	45	60	8.5	16	13.9
SEF.210.35.45.9,5	18	Bronze bearing	35	9.5	250 / 210	250	210	228	35	40	45	9.5	18	8
SEF.255.40.50.11	20	Bronze bearing	40	11	300 / 255	300	255	275	40	45	50	11	20	12
SEF.195.60.60.12	22	Bronze bearing	60	12	250 / 195	250	195	217	60	50	50	12	22	12
SEF.305.45.50.12	22	Bronze bearing	45	12	350 / 305	350	305	327	45	45	50	12	22	17
SEF.250.70.60.13	24	Bronze bearing	70	13	300 / 250	300	250	274	70	55	60	13	24	15
SEF.345.60.60.13	24	Bronze bearing	60	13	400 / 345	400	345	369	60	55	60	13	24	22.8
SEF.345.55.65.13	24	Bronze bearing	55	13	400 / 345	400	345	369	55	55	65	13	24	23.4
SEF.345.50.65.13	24	Bronze bearing	50	13	400 / 345	400	345	369	50	55	65	13	24	23.6

## Sheave with Bronze Bushing, Rigging

### Technical data

Part code	Rope Ø range mm	Bearing	Shaft Ø mm	Groove radius	Sheave dia. mm	Ø D1 mm	Ø D2 mm	Ø D3 mm	Ø G mm	E mm	F mm	Rmm mm	Ø d mm	Weight kg
SEF.345.50.60.13	24	Bronze bearing	50	13	400 / 345	400	345	369	50	55	60	13	24	24
SEF.305.70.75.14	26	Bronze bearing	70	14	350 / 305	350	305	331	70	70	75	14	26	20
SEF.240.80.62.15	28	Bronze bearing	80	15	300 / 240	300	240	268	80	58	62	15	28	11.9
SEF.300.80.62.15	28	Bronze bearing	80	15	365 / 300	365	300	328	80	58	62	15	28	15.7
SEF.345.70.70.15	28	Bronze bearing	70	15	400 / 345	400	345	373	70	55	70	15	28	22.5
SEF.345.60.70.15	28	Bronze bearing	60	15	400 / 345	400	345	373	60	55	70	15	28	23
SEF.345.80.80.15	28	Bronze bearing	80	15	400 / 345	400	345	373	80	75	80	15	28	32
SEF.390.60.70.16	28	Bronze bearing	60	16	450 / 390	450	390	418	60	60	70	16	28	32
SEF.390.55.70.15	28	Bronze bearing	55	15	450 / 390	450	390	418	55	60	70	15	28	36
SEF.390.80.80.20	28	Bronze bearing	80	20	450 / 390	450	390	428	80	70	80	20	28	40
SEF.345.70.70.16	30	Bronze bearing	70	16	400 / 345	400	345	375	70	55	70	16	30	22.3
SEF.345.60.70.16	30	Bronze bearing	60	16	400 / 345	400	345	375	60	55	70	16	30	22.8
SEF.390.70.70.16	30	Bronze bearing	70	16	450 / 390	450	390	420	70	60	70	16	30	31
SEF.430.60.80.16	30	Bronze bearing	60	16	500 / 430	500	430	460	60	70	80	16	30	44
SEF.300.80.62.17	32	Bronze bearing	80	17	365 / 300	365	300	332	80	58	62	17	32	15.1
SEF.345.80.80.17	32	Bronze bearing	80	17	400 / 345	400	345	377	80	70	80	17	32	31
SEF.390.80.80.17	32	Bronze bearing	80	17	450 / 390	450	390	422	80	70	80	17	32	41
SEF.430.100.80.17	32	Bronze bearing	100	17	495 / 430	495	430	462	100	70	80	17	32	43
SEF.430.80.80.17	32	Bronze bearing	80	17	495 / 430	495	430	462	80	70	80	17	32	44
SEF.390.80.85.17	32	Bronze bearing	80	17	450 / 390	450	390	422	80	75	85	17	32	48

## Sheave with Bronze Bushing, Rigging

### Technical data

Part code	Rope Ø range mm	Bearing	Shaft Ø mm	Groove radius	Sheave dia. mm	Ø D1 mm	Ø D2 mm	Ø D3 mm	Ø G mm	E mm	F mm	Rmm mm	Ø d mm	Weight kg
SEF.520.120.80.17	32	Bronze bearing	120	17	595 / 520	595	520	552	120	70	80	17	32	64
SEF.480.70.80.18	34	Bronze bearing	70	18	500 / 480	550	480	514	70	70	80	18	34	55
SEF.345.80.80.19	36	Bronze bearing	80	19	400 / 345	400	345	381	80	70	80	19	36	30
SEF.390.80.80.19	36	Bronze bearing	80	19	450 / 390	450	390	426	80	70	80	19	36	40
SEF.520.80.105.19,5	36	Bronze bearing	80	19.5	600 / 520	600	520	557	80	85	105	19.5	37	80
SEF.390.90.85.19,5	37	Bronze bearing	90	19.5	450 / 390	450	390	427	90	75	85	19.5	37	41
SEF.390.80.85.19,5	37	Bronze bearing	80	19.5	450 / 390	450	390	427	80	75	80	19.5	37	42
SEF.430.100.100.19,5	37	Bronze bearing	100	19.5	500 / 430	500	430	467	100	90	100	19.5	37	80
SEF.390.70.70.15	38	Bronze bearing	70	15	450 / 390	450	390	418	70	60	70	15	38	32
SEF.430.100.80.20	38	Bronze bearing	100	20	495 / 430	495	430	468	100	70	80	20	38	42
SEF.430.80.80.20	38	Bronze bearing	80	20	495 / 430	495	430	468	80	70	80	20	38	43
SEF.520.120.90.20	38	Bronze bearing	120	20	595 / 520	595	520	558	120	80	90	20	38	68
SEF.560.100.110.20,5	39	Bronze bearing	100	20.5	665 / 560	665	560	599	100	100	110	20.5	39	110
SEF.480.120.120.21,5	40	Bronze bearing	120	21.5	500 / 480	550	480	520	120	100	120	21.5	40	80
SEF.630.120.110.21,5	40	Bronze bearing	120	21.5	700 / 630	710	630	670	120	85	110	21.5	40	125
SEF.920.160.150.22	41	Bronze bearing	160	22	1030 / 920	1,030	920	961	160	130	150	22	41	380
SEF.520.120.90.23,5	44	Bronze bearing	120	23.5	595 / 520	595	520	564	120	80	90	23.5	44	66
SEF.710.150.130.23,5	44	Bronze bearing	150	23.5	810 / 710	810	710	754	150	98	130	23.5	44	170
SEF.800.150.150.22	44	Bronze bearing	150	22	920 / 800	920	800	844	150	130	150	22	44	270
SEF.1020.180.160.24,5	46	Bronze bearing	180	24.5	1160 / 1020	1,160	1,020	1,066	180	140	160	24.5	46	540

## Sheave with Bronze Bushing, Rigging

### Technical data

Part code	Rope Ø range mm	Bearing	Shaft Ø mm	Groove radius	Sheave dia. mm	Ø D1 mm	Ø D2 mm	ØD3 mm	ØG mm	E mm	F mm	Rmm mm	Ø d mm	Weight kg
SEF.520.120.90.27,5	52	Bronze bearing	120	27.5	595 / 520	595	520	572	120	80	90	27.5	52	64