

## Horizontal Directional Blocks

---

### Product information

- No test certificate possible.
- Groove in sheave may be adjusted to other wire rope diameters.

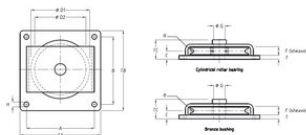
... [Read more](#)

---



## Horizontal Directional Blocks

### Blueprint



### Technical data

| Part code      | Rope Ø range mm | WLL ton | Bearing        | Bearing | A mm | B mm | C mm | D1 mm | D2mm mm | F mm | G, mm | H, mm | T mm | Rmm mm | TA mm mm | TBmm mm | TC mm mm | Weight kg |
|----------------|-----------------|---------|----------------|---------|------|------|------|-------|---------|------|-------|-------|------|--------|----------|---------|----------|-----------|
| 16.19251250170 | 10              | 1       | Bronze bearing | Bronze  | 180  | 150  | 22.5 | 125   | 105     | 27   | 22    | 9     | 8    | 5.5    | 200      | 170     | 54       | 5         |
| 16.19251500270 | 12              | 2       | Bronze bearing | Bronze  | 220  | 190  | 31   | 150   | 120     | 40   | 30    | 11    | 10   | 6.5    | 250      | 220     | 72       | 10        |
| 16.19252000370 | 14              | 3       | Bronze bearing | Bronze  | 290  | 240  | 33   | 200   | 165     | 40   | 30    | 13.5  | 12   | 7.5    | 320      | 270     | 76       | 17        |
| 16.19252500470 | 18              | 4       | Bronze bearing | Bronze  | 360  | 310  | 38.5 | 250   | 210     | 45   | 35    | 17.5  | 15   | 9.5    | 400      | 350     | 86       | 32        |
| 16.19253000670 | 20              | 6       | Bronze bearing | Bronze  | 400  | 360  | 46   | 300   | 255     | 50   | 40    | 22    | 20   | 11     | 450      | 410     | 99       | 50        |
| 16.19253500870 | 22              | 8       | Bronze bearing | Bronze  | 460  | 420  | 46   | 350   | 305     | 50   | 45    | 26    | 20   | 12     | 520      | 480     | 99       | 70        |
| 16.19254001070 | 24              | 10      | Bronze bearing | Bronze  | 530  | 480  | 51   | 400   | 345     | 60   | 50    | 32    | 20   | 13     | 600      | 550     | 113      | 100       |