

Open Spelter Socket McKissick G-416

Product information



Standard: Fed Spec RR-S-550D TYPE A.

... [Read more](#)

Features: Spelter socket terminations have an efficiency rating of 100%, based on the catalogue strength of wire rope.

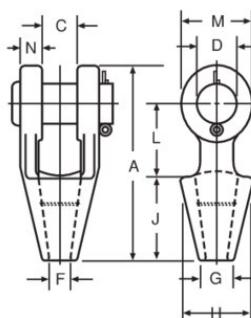
Material: Forged steel sockets through 1 1/2", cast alloy steel 1-5/8" through 4".

Marking: ID code and Manufacturer's symbol.

Finish: Galvanized.

Open Spelter Socket McKissick G-416

Blueprint



Technical data

Part code	Rope Ø range mm	MBL ton	Finish	Rope Ø inch	A mm	C mm	D mm	F mm	G mm	H mm	J mm	L mm	M mm	N mm	Weight kg
10.101039637	8-10	12	Galvanized	5/16 - 3/8	123	20.6	20.6	12.7	20.6	42.9	57	44.5	38.1	11.2	0.59
10.101039655	11-13	20	Galvanized	7/16 - 1/2	141	25.4	25.4	14.2	23.9	47.8	63.5	51	47.8	12.7	1.02
10.101039673	14-16	27	Galvanized	9/16 - 5/8	171	31.8	30.2	17.5	28.7	57	76	63.5	57	14.2	1.63
10.101039691	18	43	Galvanized	3/4	202	38.1	35.1	20.6	31.8	66.5	89	76	66.5	15.7	2.64
10.101039717	20-22	55	Galvanized	7/8	235	44.5	41.4	23.9	38.1	82.5	102	89	79.5	20.3	4.38
10.101039735	24-26	78	Galvanized	1	268	51	51	28.7	44.5	95.5	114	102	95.5	22.4	7.03
10.101039753	28-30	92	Galvanized	1 1/8	300	57	57	31.8	51	105	127	117	105	25.4	9.75
10.101039771	32-35	136	Galvanized	1 1/4 - 1 3/8	335	63.5	63.5	38.1	57	121	140	127	121	28.7	14.1
10.101039799	38	170	Galvanized	1 1/2	384	76	70	41.4	70	133	152	152	137	30.2	21.4
10.101039815	40-42	188	Galvanized	† 1 5/8	413	76	76	44.5	76	140	165	165	146	33.3	24.9
10.101039833	44-48	268	Galvanized	† 1 3/4 - 1 7/8	464	89	89	51	79.5	162	191	178	165	39.6	37.2
10.101039851	50-54	291	Galvanized	† 2 - 2 1/8	546	102	95.5	57	95.5	187	216	229	178	46	59
10.101039879	56-60	360	Galvanized	† 2 1/4 - 2 3/8	597	114	108	63.5	102	210	229	254	197	54	76
10.101041633	64-67	424	Galvanized	† 2 1/2 - 2 5/8	648	127	121	73	114	235	248	274	216	60.5	114
10.101041651	70-73	511	Galvanized	† 2 3/4 - 2 7/8	692	133	127	79	124	267	279	279	229	73	143
10.101041679	75-80	563	Galvanized	† 3 - 3 1/8	737	146	133	86	133	282	305	287	241	76	172
10.101041697	82-86	722	Galvanized	† 3 1/4 - 3 3/8	784	159	140	92	146	302	330	300	254	79	197
10.101041713	88-92	779	Galvanized	† 3 1/2 - 3 5/8	845	171	152	98.5	165	314	356	318	274	82.5	255
10.101041731	94-102	875	Galvanized	† 3 3/4 - 4	921	191	178	108	184	346	381	343	318	89	355