

Closed Spelter Socket G-417

Product information



McKissick Closed spelter socket for steel wire rope \varnothing 8 mm up to \varnothing 102 mm. Spelter socket terminations have an efficiency rating of 100%, based on the catalogue strength of wire rope.

Features:

- Forged Steel Sockets through 38 mm, cast alloy steel 40 mm through 102mm.
- All cast steel sockets 40 mm and larger are magnetic particle inspected and ultrasonic inspected.
- Proof testing available on special order.
- Spelter socket terminations have an efficiency rating of 100%, based on the catalog strength of wire rope.
- Ratings are based on recommended use with 6x7, 6x19, or 6x37, IPS or XIP (EIP), XXIP (EEIP), RRL, FC, or IWRC wire rope.
- Strand constructed with minimal number of wires (e.g. 1x7) requires special consideration that socket basket length be five (5) times the strand diameter or fifty (50) times the wire diameter, whichever is the greater.
- Also available in self-coloured / ungalvanized version on request.

Standard: Fed Spec RR-S-550D TYPE B.

[... Read more](#)

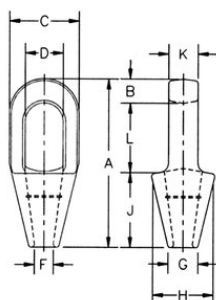
Material: Forged steel from wire rope \varnothing 8mm up to 38mm. From \varnothing 40mm Cast Alloy steel.

Marking: ID code and Manufacturer's symbol.

Finish: Galvanized.

Closed Spelter Socket G-417

Blueprint



Technical data

Part code	Rope Ø range mm	MBL ton	Finish	A mm	B mm	C mm	D, mm	F mm	G, mm	H, mm	J mm	K mm	L mm	Weight kg
10.101039913	8-10	12	Galvanized	125	15.8	42.9	24.6	12.7	20.6	42.9	57.2	17.5	52.3	0.34
10.101039931	11-13	20	Galvanized	140	17.5	51	29.5	14.2	23.9	51	63.5	22.4	58.7	0.68
10.101039959	14-16	30.8	Galvanized	162	20.6	67	35.8	17.5	30.2	67	76.2	25.4	65	1.13
10.101039977	18	43.5	Galvanized	194	26.9	76.2	42.2	22.4	33.3	70	89	31.8	77.7	1.92
10.101039995	20-22	65.3	Galvanized	226	33.3	92	49.3	25.4	38.1	82.5	102	38.1	90.5	3.28
10.101040019	24-26	81.6	Galvanized	254	36.6	105	58.5	28.7	44.5	95.5	114	44.5	103	4.76
10.101040037	28-30	100	Galvanized	283	39.6	114	65	31.8	51	105	127	51	116	6.46
10.101040055	32-35	136	Galvanized	309	41.4	127	71	38.1	58.5	119	138	56.5	129	8.95
10.101040073	38	170	Galvanized	355	49.3	137	81	41.4	70.5	132	151	62.5	155	13.24
10.101040091	40-42	188	Galvanized	390	54	146	82.5	44.5	76.2	140	165	70	171	16.32
10.101040117	44-48	268	Galvanized	445	55.5	171	95.5	51	79.5	162	191	76.2	198	25.96
10.101040135	50-54	309	Galvanized	505	62	194	111	57.2	95.5	187	216	82.5	224	35.83
10.101040153	56-60	360	Galvanized	546	70	216	127	66.8	105	210	229	92	248	47.62
10.101041759	64-67	424	Galvanized	597	79.5	241	140	74.5	114	235	248	102	270	63.5
10.101041777	70-73	549	Galvanized	645	79.5	273	159	79.5	124	259	279	124	286	99.79
10.101041795	75-80	656	Galvanized	689	85.6	292	171	86	133	292	305	133	298	125
10.101041811	82-86	750	Galvanized	743	102	311	184	92	146	311	330	146	311	142
10.101041839	88-92	820	Galvanized	787	102	330	197	98.5	160	330	356	159	330	181
10.101041857	94-102	1,005	Galvanized	845	108	362	216	108	184	362	381	178	356	246