

## Swivel Regular Crosby G-402

### Product information



**Design:** Chain swivels with out bearing. According to Federal Specification RR-C-271F.

... [Read more](#)

**Material:** Hot dip Galvanized - Quenched & Tempered

**Marking:** WLL

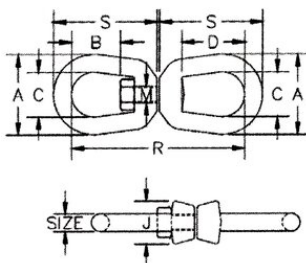
**Finish:** Galvanized

**Note:** The swivels are positioning devices and are not intended to rotate under load. For load swivels, see ball bearing swivels.

**Safety factor:** 5:1

## Swivel Regular Crosby G-402

### Blueprint



### Technical data

Part code	Diameter mm	WLL ton	A mm	B mm	C mm	D, mm	J mm	Mmm mm	Rmm mm	S mm	Weight kg
11.451016037	8	0.57	41.4	20.6	25.4	31.8	20.6	9.65	90.4	52.3	0.18
11.451016055	10	1.02	51	23.9	31.8	38.1	25.4	12.7	109	63.5	0.32
11.451016073	13	1.63	63.5	33.3	38.1	51	33.3	16	138	81	0.6
11.451016091	16	2.36	76	39.5	44.5	60.5	38.1	19.1	167	98.5	1.13
11.451016117	19	3.27	89	44.5	51	67	47.8	22.4	183	109	1.82
11.451016135	22	4.54	102	52	57	77.5	54	25.4	213	127	2.83
11.451016153	25	5.67	114	58.5	63.5	89	60.5	28.7	245	146	4.06
11.451016199	32	8.16	143	68.5	79.5	93.5	76	38.1	291	172	7.42
11.451016215	38	20.5	180	98.5	104	98.5	95.2	57	424	252	20.8