

## Swivel Eye / Jaw Crosby S4

### Product information



**Design:** Swivel with eye and jaw equipped with tapered roller thrust bearing.

**Features:**

- Suitable for frequent rotation under load.
- All swivels individually Proof Tested to 2 times the Working Load Limit.
- Pressure lube fitting provided.
- All jaws complete with bolts, nuts and cotter pins.
- Other types and capacities up to 1250 t available on demand.

... [Read more](#)

**Marking:** CE-marked

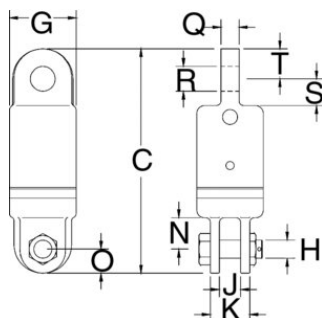
**Note:** Always check before use if your steel wire rope is suitable for use with a swivel.

**Warning:** Not to be used on demolition- (wrecking-) balls!

**Safety factor:** 5:1

## Swivel Eye / Jaw Crosby S4

### Blueprint



### Technical data

Part code	Rope Ø range mm	WLL ton	Swivel No	C mm	G mm	H mm	J mm	K mm	N mm	O mm	Q mm	R mm	S mm	T mm	Weight kg
11.46297048	13	3	3-S-4	237	70	19.1	22.4	41.1	33.3	25.4	19.1	26.2	28.4	31.8	4.08
11.46297244	16	5	5-S-4	256	76	22.4	25.4	57	41.1	28.4	25.4	32.5	31.8	31.8	5.6
11.46297440	19	8.5	8-S-4	311	102	25.4	39.5	71.5	54	35.1	31.8	35.8	41.1	38.1	13.2
11.46297645	22	10	10-S-4	409	114	38.1	44.5	86	89	44.5	42.9	42.9	70	47.8	20
11.46297841	26	15	15-S-4	425	127	38.1	44.5	86	89	44.5	49.3	51.5	70	54	27.7
11.46298145		25	25-S-4	546	152	51	51	117	93.5	60.5	57	58.5	98.5	60.5	61
11.46298341		45	45-S-4	657	178	57	63.5	127	102	76	63.5	64.5	102	76	102