

Snatch Block McKissick 404 Tail Board Light Champion

Product information



General:

The McKissick snatch block 404 Light Champion from Crosby is a Tail board type snatch block. Available from WLL 2 up to 8 T. Can be delivered with bronze bushing (BB) and from WLL 8 T also with roller bearing (RB).

Features:

- Bolt for opening feature is retained, to ensure no lost bolts.
- Opening feature permits easy insertion of rope without reeving, or while the block is suspended.
- Center pin equipped with pressure lube fitting.
- All sizes feature sheave grooves suited for a range of wire line diameters.
- Meets or exceeds all requirements of ASME B30.26 including identification ductility, design factor, proof load and temperature requirements.
- Meet other critical performance requirements including fatigue life and material traceability, not addressed by ASME B30.26.

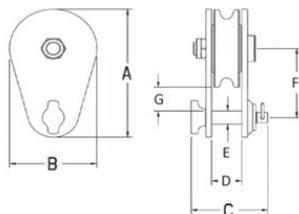
... [Read more](#)

Material: Forged steel.

Safety factor: 4:1

Snatch Block McKissick 404 Tail Board Light Champion

Blueprint



Technical data

| Part code | Rope Ø range mm | WLL ton | Sheave dia mm | Bearing | A mm | B mm | C mm | D mm | E mm | F mm | G mm | Weight kg |
|-------------|-----------------|---------|---------------|---------|------|------|------|------|------|------|------|-----------|
| 16.15102015 | 8-10 | 2 | 76 | BB | 124 | 76 | 67 | 26 | 13 | 67 | 22 | 1.4 |
| 16.15102025 | 10-13 | 4 | 114 | BB | 197 | 108 | 79 | 40 | 19 | 108 | 41 | 3.2 |
| 16.15102098 | 16-19 | 8 | 152 | BB | 251 | 152 | 106 | 46 | 25 | 130 | 41 | 6.8 |
| 16.15102114 | 16-19 | 8 | 152 | RB | 251 | 152 | 106 | 46 | 25 | 130 | 41 | 6.8 |
| 16.15102169 | 16-19 | 8 | 203 | BB | 303 | 206 | 106 | 46 | 25 | 155 | 41 | 9.5 |
| 16.15102187 | 16-19 | 8 | 203 | RB | 303 | 206 | 106 | 46 | 25 | 155 | 41 | 9.5 |
| 16.15102230 | 16-19 | 8 | 254 | BB | 356 | 257 | 106 | 46 | 25 | 183 | 43 | 13.2 |