

## Vacuum Beam For Forklift AERO-SELECT

---

### Product information



The standard vacuum beam AERO-SELECT is a battery-powered version of the AERO-BASIC models for indoor use. The battery indicator always shows its battery status.

The vacuum beam has an adjustable forklift attachment that is compatible with nearly all forks. It can also be used on a crane hook. The remote-control panel makes operating from the driver's seat or anywhere else easy.

### Product variants

The AERO-SELECT vacuum lifting beams are available in more versions with:

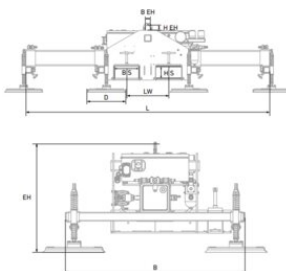
- Load capacities from 150 kg up to 2.000 kg
- From 4 up to 8 suction plates
- With 2 up to 4 cross beams
- Different suction plate diameters, cross beam lengths etc.

... [Read more](#)

---

## Vacuum Beam For Forklift AERO-SELECT

### Blueprint



### Technical data

WLL ton	Model	Main beam length mm	Suction plate quantity / Ø mm	D mm	L mm	B mm	BS mm	HS mm	H EH/B EH mm	EH mm	LW mm	Weight kg
0.15	AE-SELECT 150/4R/2000	2,000	4 - ø170	170	2,000	1,000	220	100	53x56	545	380	195
0.4	AE-SELECT 400/4R/2000	2,000	4 - ø210	210	2,000	1,000	220	100	53x56	590	380	205
0.4	AE-SELECT 400/8R/2000	2,000	8 - ø170	170	2,000	1,000	220	100	53x56	545	380	220
0.6	AE-SELECT 600/4R/2000	2,000	4 - ø270	270	2,000	1,000	220	100	53x56	595	380	210
0.6	AE-SELECT 600/8R/2000	2,000	8 - ø210	210	2,000	1,000	220	100	53x56	595	380	230
0.9	AE-SELECT 900/8R/2000	2,000	8 - ø270	270	2,000	1,000	220	100	53x56	595	380	235
1	AE-SELECT 1000/8R/2000	2,000	8 - ø270	270	2,000	1,000	220	100	53x56	595	380	235
1.5	AE-SELECT 1500/8R/3000	3,000	8 - ø350	350	3,000	1,000	220	100	53x56	610	380	284
2	AE-SELECT 2000/8R/3000	3,000	8 - ø350	350	3,000	1,000	220	100	53x56	610	380	285