

Lifting Point Ring Bolt Powertex LP580

Product information



The Powertex LP580 eye bolt is the most simple and essential product in our range of lifting points. It is designed to permanently attach equipment such as motors, control cabinets, and gearboxes. This lifting point ensures reliable performance and safety in your operations but also has some limitations. As it is a fixed lifting eye, we recommend it primarily for straight single-point lifts. The lifting point shall be screwed tightly to the structure or load. Please check other products in our range for more advanced and versatile lifting points.

Allowed Loading Directions:

- Straight (max WLL) Sideways (not perpendicular to the eye)
- 180 degrees in the plane of the eye (+/- 90 degrees from centre line)
- Check the WLL Table for proper WLL reductions when loading sideways

Product Features:

- Durable finish: electro galvanized (Chrome 6 Free)
- Compliance with standard: made to meet the testing requirements specified by DIN580, ensuring high safety and quality standards.
- Reliable: designed with a safety factor of 6:1 in the intended load directions, offering a secure lifting experience.
- Quality assurance: samples are load tested in the factory to ensure high reliability.
- Full traceability: every component is marked with PX branding, WLL, CE mark, Size, Material (C15E), and a traceability code, ensuring traceability to the production lot and raw materials.
- WLL indication: the LP580 is marked with the WLL (straight loading 0°) and an arrow that shows the corresponding load direction. The WLL chart provides an applicable WLL for other loading directions.
- Harmless: Chromium 6 free, aligning with environmental safety standards. [... Read more](#)

Material: Carbon Steel C15E

Marking: According to standard, CE-marked, PX, Material, WLL, Nominal size, Batch number, Arrow indicating the axial direction

Temperature range: -20°C up to +200°C

Finish: Electro galvanized (Cr-6 free)

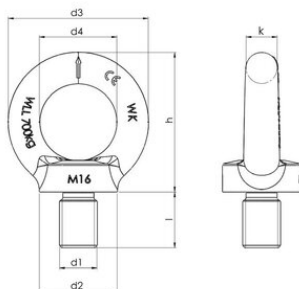
Standard: DIN 580

Note: The lifting eyes shall be screwed tight against the surface. Reduce WLL when not loading straight (see load table).

Safety factor: 6:1

Lifting Point Ring Bolt Powertex LP580

Blueprint



Technical data

Code	WLL ton	Min. breaking force kN	Thread mm	d1 mm	d2 mm	d3 mm	d4 mm	h mm	k mm	l mm	Weight kg
LP580-M6	0.075	4.4	M6	M6	20	36	20	36	8	13	0.05
LP580-M8	0.14	8.2	M8	M8	20	36	20	36	8	13	0.06
LP580-M10	0.23	13.5	M10	M10	25	45	25	45	10	17	0.1
LP580-M12	0.34	20	M12	M12	30	54	30	53	12	20.5	0.17
LP580-M14	0.49	28.8	M14	M14	35	63	35	62	14	27	0.28
LP580-M16	0.7	41.2	M16	M16	35	63	35	62	14	27	0.29
LP580-M20	1.2	70.6	M20	M20	40	72	40	71	16	30	0.45
LP580-M24	1.8	106	M24	M24	50	90	50	90	20	36	0.89
LP580-M30	3.2	189	M30	M30	65	108	60	109	24	45	1.6
LP580-M36	4.6	271	M36	M36	75	126	70	128	28	54	2.5