

Open Spelter Sockets with pin OSS P

Product information



Quenched and tempered cast steel range steel wire rope sockets for embedment with cast compound with mechanical values (Charpy-V > 42 Joule /-20°C) for tough and low temperature use. For wire rope diameter 6 - 203 mm (1/4" - 8").

2 surface finishes available:

- Model OSS P: blue painted. (OSS 196 until OSS 100 only Hot dipped galvanized)
- Model OSS P.GAL: Hot dipped galvanized.

Features:

- Pin securing by cotter pin.
- All spelter sockets have a 100% efficiency.
- Also available with pin + bolt (type OSS B)

... [Read more](#)

Material: Quenched and tempered cast steel

Marking: CE-marked, Size, wire rope diameter and batch or serial number.

Temperature range: From - 40°C up to +110°C - 100% capacity range.

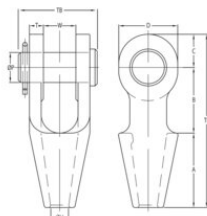
Finish: OSS P: blue painted - OSS PGAL : Hot dipped galvanized.

Note: For intermediate rope diameter select fittings with nearest following size.

Warning: Compare the spelter's and the wire rope's minimum breaking load.

Open Spelter Sockets with pin OSS P

Blueprint



Technical data

Part code	Code	Rope Ø range mm	MBL ton	Finish	Strand Ø mm	A mm	B mm	C mm	D mm	Ø H mm	Ø P mm	T mm	TL mm	TB mm	W mm	Weight kg
10.10OSS196P.GAL	OSS196P.GAL	6-7	8	Galvanized	-	50	40	19	34	9	16	9	109	51	19	0.4
10.10OSS197P.GAL	OSS197P.GAL	8-10	12	Galvanized	-	57	45	22	42	13	20	11	124	63	21	0.7
10.10OSS198P.GAL	OSS198P.GAL	11-13	20	Galvanized	-	64	51	27	50	15	25	12	142	67	25	1
10.10OSS199P.GAL	OSS199P.GAL	14-16	25	Galvanized	13	76	63	32	58	18	30	14	171	85	32	1.8
10.10OSS100P.GAL	OSS100P.GAL	18-19	40	Galvanized	14-16	89	76	40	70	22	35	16	205	95	38	3
10.10OSS104P	OSS104P	20-22	55	Painted	18-19	101	89	45	80	25	41	19	235	110	44	4.6
10.10OSS104P.GAL	OSS104P.GAL	20-22	55	Galvanized	18-19	101	89	45	80	25	41	19	235	110	44	4.6
10.10OSS108P	OSS108P	23-26	75	Painted	20-22	114	101	60	104	29	51	22	275	128	51	8
10.10OSS108P.GAL	OSS108P.GAL	23-26	75	Galvanized	20-22	114	101	60	104	29	51	22	275	128	51	8
10.10OSS111P	OSS111P	27-30	90	Painted	23-26	127	114	65	114	33	57	25	306	142	57	11
10.10OSS111P.GAL	OSS111P.GAL	27-30	90	Galvanized	23-26	127	114	65	114	33	57	25	306	142	57	11
10.10OSS115P	OSS115P	31-36	125	Painted	27-28	139	127	72	126	39	63	28	338	155	63	15
10.10OSS115P.GAL	OSS115P.GAL	31-36	125	Galvanized	27-28	139	127	72	126	39	63	28	338	155	63	15
10.10OSS118P	OSS118P	37-39	150	Painted	30-32	152	162	80	142	42	70	30	394	177	76	22
10.10OSS118P.GAL	OSS118P.GAL	37-39	150	Galvanized	30-32	152	162	80	142	42	70	30	394	177	76	22
10.10OSS120P	OSS120P	40-42	170	Painted	33-35	165	165	88	156	45	76	33	418	187	76	27
10.10OSS120P.GAL	OSS120P.GAL	40-42	170	Galvanized	33-35	165	165	88	156	45	76	33	418	187	76	27
10.10OSS125P	OSS125P	43-48	225	Painted	36-40	191	178	100	176	52	89	39	469	215	89	41
10.10OSS125P.GAL	OSS125P.GAL	43-48	225	Galvanized	36-40	191	178	100	176	52	89	39	469	215	89	41
10.10OSS128P	OSS128P	49-54	280	Painted	42-45	216	228	108	194	59	95	45	552	244	101	60
10.10OSS128P.GAL	OSS128P.GAL	49-54	280	Galvanized	42-45	216	228	108	194	59	95	45	552	244	101	60
10.10OSS130P	OSS130P	55-60	360	Painted	46-48	229	254	120	210	64	108	53	603	275	113	88

Open Spelter Sockets with pin OSS P

Technical data

Part code	Code	Rope Ø range mm	MBL ton	Finish	Strand Ø mm	A mm	B mm	C mm	D mm	Ø Hmm mm	Ø Pmm mm	T mm	TLmm mm	TBmm mm	Wmm mm	Weight kg
10.10OSS130P.GAL	OSS130P.GAL	55-60	360	Galvanized	46-48	229	254	120	210	64	108	53	603	275	113	88
10.10OSS132P	OSS132P	61-68	425	Painted	50-54	248	273	133	236	75	121	60	654	300	127	118
10.10OSS132P.GAL	OSS132P.GAL	61-68	425	Galvanized	50-54	248	273	133	236	75	121	60	654	300	127	118
10.10OSS135P	OSS135P	69-75	460	Painted	56-62	279	279	138	240	81	127	73	696	335	133	155
10.10OSS135P.GAL	OSS135P.GAL	69-75	460	Galvanized	56-62	279	279	138	240	81	127	73	696	335	133	155
10.10OSS138P	OSS138P	76-80	560	Painted	64-67	305	286	146	252	88	133	76	737	355	146	186
10.10OSS138P.GAL	OSS138P.GAL	76-80	560	Galvanized	64-67	305	286	146	252	88	133	76	737	355	146	186
10.10OSS140P	OSS140P	81-86	625	Painted	69-76	330	298	160	290	92	140	79	788	375	159	227
10.10OSS140P.GAL	OSS140P.GAL	81-86	625	Galvanized	69-76	330	298	160	290	92	140	79	788	375	159	227
10.10OSS142P	OSS142P	87-93	720	Painted	78-86	356	318	178	320	99	152	83	852	400	171	283
10.10OSS142P.GAL	OSS142P.GAL	87-93	720	Galvanized	78-86	356	318	178	320	99	152	83	852	400	171	283
10.10OSS144P	OSS144P	94-102	875	Painted	88-96	381	343	190	350	108	178	89	914	435	191	374
10.10OSS144P.GAL	OSS144P.GAL	94-102	875	Galvanized	88-96	381	343	190	350	108	178	89	914	435	191	374
10.10OSS146P	OSS146P	108-115	1,200	Painted	98-110	450	480	215	400	129	195	100	1,145	465	205	539
10.10OSS146P.GAL	OSS146P.GAL	108-115	1,200	Galvanized	98-110	450	480	215	400	129	195	100	1,145	465	205	539
10.10OSS150P	OSS150P	120-130	1,400	Painted	112-124	500	500	250	450	147	220	110	1,250	525	225	761
10.10OSS150P.GAL	OSS150P.GAL	120-130	1,400	Galvanized	112-124	500	500	250	450	147	220	110	1,250	525	225	761
10.10OSS155P	OSS155P	135-140	1,600	Painted	125-132	540	497	263	480	157	240	140	1,300	590	230	1,067
10.10OSS155P.GAL	OSS155P.GAL	135-140	1,600	Galvanized	125-132	540	497	263	480	157	240	140	1,300	590	230	1,067
10.10OSS160P	OSS160P	142-153	2,000	Painted	133-143	585	505	275	500	171	255	140	1,365	610	250	1,172
10.10OSS160P.GAL	OSS160P.GAL	142-153	2,000	Galvanized	133-143	585	505	275	500	171	255	140	1,365	610	250	1,172
10.10OSS165P	OSS165P	154-165	2,220	Painted	144-154	630	530	300	550	185	275	150	1,460	640	260	1,441
10.10OSS165P.GAL	OSS165P.GAL	154-165	2,220	Galvanized	144-154	630	530	300	550	185	275	150	1,460	640	260	1,441
10.10OSS170P	OSS170P	166-178	2,500	Painted	155-166	680	570	310	570	199	295	150	1,560	660	280	1,615
10.10OSS170P.GAL	OSS170P.GAL	166-178	2,500	Galvanized	155-166	680	570	310	570	199	295	150	1,560	660	280	1,615
10.10OSS175P	OSS175P	180-191	2,800	Painted	167-179	725	600	325	600	213	310	155	1,650	689	300	1,907
10.10OSS175P.GAL	OSS175P.GAL	180-191	2,800	Galvanized	167-179	725	600	325	600	213	310	155	1,650	689	300	1,907
10.10OSS180P	OSS180P	192-204	3,200	Painted	180-191	775	620	345	640	229	330	160	1,740	720	320	2,239
10.10OSS180P.GAL	OSS180P.GAL	192-204	3,200	Galvanized	180-191	775	620	345	640	229	330	160	1,740	720	320	2,239