

Open Swage Socket Crosby S-501

Product information



Features:

- Swage sockets incorporate a reduced machined area of the shank which is the equivalent to the proper after swage dimension. Before swaging, this provides for an obvious visual difference in the shank diameter. After swaging, a uniform shank diameter is created allowing for a QUIC CHECK™ permanent visual inspection opportunity.
- Designed to quickly determine whether the socket has been through the swaging operation and assist in field inspections, it does not eliminate the need to perform standard production inspections which include gauging for the proper after swage dimensions or proof loading.
- Hardness controlled by spheroidise annealing.
- Swage socket terminations have an efficiency rating of 100% based on the catalogue strength of wire rope.

[... Read more](#)

Material: Carbon Steel.

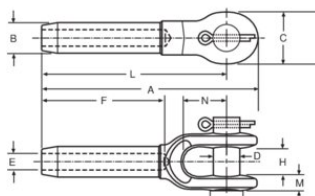
Marking: ID code and Manufacturer's symbol.

Finish: Ungalvanised.

Safety factor: 5:1

Open Swage Socket Crosby S-501

Blueprint



Technical data

Part code	Rope Ø range mm	Max. after swage dia mm	A mm	B mm	C mm	D mm	E mm	F mm	H mm	L mm	M mm	N mm	Weight kg
10.061039021	6	11,7	122	12,7	35,1	17,5	6,85	54,0	17,5	102	9,65	38,1	0.24
10.061039049	8	18	159	19,6	41,1	20,6	8,65	81,0	20,6	135	11,9	44,5	0.51
10.061039067	9-10	18	159	19,6	41,1	20,6	10,4	81,0	20,6	135	11,9	44,5	0.59
10.061039085	11-12	23,1	198	24,9	51,0	25,4	12,2	108	25,4	170	14,2	51,0	0.94
10.061039101	13	23,1	198	24,9	51,0	25,4	14,0	108	25,4	170	14,2	51,0	0.94
10.061039129	14	29,5	241	31,8	60,5	30,2	15,5	135	31,8	207	17,3	57,0	2.12
10.061039147	16	29,5	241	31,8	60,5	30,2	17,0	135	31,8	207	17,3	57,0	2.05
10.061039165	18-20	36,1	294	39,4	70,0	35,1	20,3	162	38,1	254	20,3	70,0	3.62
10.061039183	22	39,4	341	43,2	79,5	41,1	23,9	189	44,5	295	23,9	82,5	5.23
10.061039209	24-26	45,7	393	50,5	93,5	51,0	26,9	216	51,0	340	26,9	95,5	8.07
10.061039227	28	52	440	57,0	105	57,0	30,2	245	57,0	381	30,2	108	11.5
10.061039245	32	58,5	484	64,5	114	63,5	33,8	272	63,5	419	31,0	119	16.1
10.061039263	34-36	65	532	71,0	127	63,5	36,8	297	63,5	461	35,1	133	19.8
10.061039281	38-40	71,5	589	78,0	140	70,0	40,1	325	76,0	502	43,4	145	26.5
10.061039307	44	77,5	676	86,0	170	89,0	47,2	378	89,0	584	53,6	171	40.3
10.061042767	48-52	90,5	799	100	203	95,5	53,5	432	102	683	60	203	66