

## Push Trolley Powertex PPT-S2

### Product information



### POWERTEX

Powertex PPT-S2 is a high quality, durable low built push trolley that is easy to install on horizontal beams and rails.

The trolleys can be used for I-beams with plane flanges (such as IPE, HEA or HEB types) or beams with sloping flanges (such as INP-beams).

The trolley can easily be positioned along the beam by pushing or pulling thanks to high quality steel wheels with bearings.

#### Features:

- Safe - All Powertex trolleys are proof load tested 1,5 x WLL
- **Mechanical stops integrated in the design** to prevent derailing
- Equipped with connection plate with eye to hoist's upper hook or direct connection
- Connection plate can be turned 90 degrees to allow direct connection to Powertex S2 hoists without need of intermediate hook/eye
- Rubber bumpers to absorb shock loads on impact to rail ending
- Equipped with RFID for quick registration and maintenance
- Marked with QR code to allow access to user manuals at any time
- PPT-S2 is easy to mount and dismount on a horizontal rail or beam
- The 3 piece design makes installation quick and ergonomically
- The shaft is easily locked using the lock plate (No need to use large castle nut nor collar pins)
- Wheel shafts are robotic welded for high quality weld seams
- Large steel wheels equipped with double sided sealed bearings that do not need ... [Read more](#)

**Marking:** According to standard, CE-marked, WLL, beam width, individual serial number

**Temperature range:** -10°C up to +50°C.

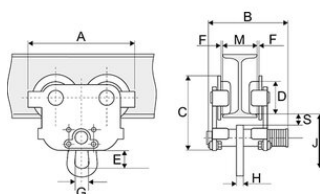
**Finish:** Black powder painted (Matt finish)

**Standard:** EN 13157, AS 1418.2

**Safety factor:** 4:1

## Push Trolley Powertex PPT-S2

### Blueprint



### Technical data

Part code	WLL ton	Beam width mm	Model	Minimum radius mm	A mm	B mm	C mm	D mm	E mm	F mm	G mm	H mm	J mm	S mm	Weight kg
16.05PPTS20025	0.25	50-152	PPT-S2	800	188	208	137	50	29	1 – 1,5	28	6	104	27	4.6
16.05PPTS2005	0.5	50-135	PPT-S2	800	205	198	150	55	30	1,5 – 2	28	8	111	27	6.8
16.05PPTS2005B	0.5	130-215	PPT-S2	800	205	278	150	55	30	1,5 - 2	28	8	111	27	7.6
16.05PPTS2005C	0.5	215-300	PPT-S2	800	205	363	150	55	30	1,5 – 2	28	8	111	27	8.4
16.05PPTS2010	1	55-140	PPT-S2	1,000	242	211	174	68	30	1,5 – 2	32	10	118	28	11.2
16.05PPTS2010B	1	140-215	PPT-S2	1,000	242	286	174	68	30	1,5 – 2	32	10	118	28	12.2
16.05PPTS2010C	1	215-300	PPT-S2	1,000	242	371	174	68	30	1,5 – 2	32	10	118	28	13.5
16.05PPTS2020	2	65-155	PPT-S2	1,100	270	238	194	80	49	1,5 – 2	40	12	147	27	16.9
16.05PPTS2020B	2	150-230	PPT-S2	1,100	270	313	194	80	49	1,5 – 2	40	12	147	27	18.1
16.05PPTS2020C	2	230-300	PPT-S2	1,100	270	383	194	80	49	1,5 – 2	40	12	147	27	19.3
16.05PPTS2030	3	90-160	PPT-S2	1,300	325	246	234	100	60	2 – 3	49	14	177	29	28.6
16.05PPTS2030B	3	160-230	PPT-S2	1,300	325	316	234	100	60	2 – 3	49	14	177	29	30.2
16.05PPTS2030C	3	230-300	PPT-S2	1,300	325	386	234	100	60	2 – 3	49	14	177	29	31.8
16.05PPTS2050	5	90-180	PPT-S2	1,500	370	280	267	110	79	2 – 3	59	16	219	29	44.8
16.05PPTS2050B	5	180-230	PPT-S2	1,500	370	330	267	110	79	2 – 3	59	16	219	29	46.5
16.05PPTS2050C	5	230-300	PPT-S2	1,500	370	330	267	110	79	2 – 3	59	16	219	29	48.9