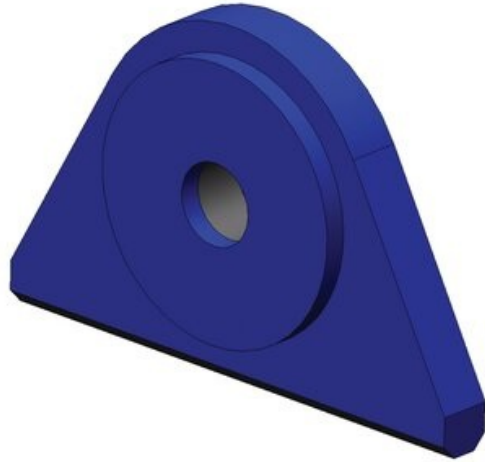


Pad Eyes Type S



Product information

Weldable lifting eye, available with lifting capacities from 1 up to 150 ton.

- Pad eyes will be supplied including material certificates (S355J2G3, EN 10204 3.1).
- $T \geq 75\%$ of inside width of shackle.
- $H \leq 106\%$ of diameter of pin.
- Weld primer applied.

Material: Steel S355J2G3

Finish: Weldable primer

Safety factor: 6:1

Part code	Rope Ø range mm	WLL ton	Shackle size	L mm	A mm	øH	R mm	t mm	T mm	Weight kg
11.4453001000S	9-10	1	3/8	76	32	11.5	26	14	14	0.3
11.4453001500S	9-10	1.5	7/16	90	32	13.5	32	15	15	0.5
11.4453002000S	12-13	2	1/2	100	38	17	35	18	18	0.7
11.4453003250S	19	3.25	5/8	115	45	20	38	22	22	1.5
11.4453004750S	19	4.75	3/4	140	51	23	45	25	25	2
11.4453006500S	25-26	6.5	7/8	150	57	26	51	30	30	3
11.4453008500S	25-26	8.5	1	180	64	29.5	64	35	35	5
11.4453009500S	25-26	9.5	1 1/8	203	76	33.5	76	40	40	7.5
11.4453012000S	32	12	1 1/4	216	83	37	83	45	45	10
11.4453013500S	32	13.5	1 3/8	228	89	40	89	30	50	10
11.4453017000S	35	17	1 1/2	280	140	44	102	40	50	18
11.4453025000S	41-42	25	1 3/4	305	140	53	121	40	60	23
11.4453035000S	51	35	2	356	153	60	133	50	70	35
11.4453055000S	63-64	55	2 1/2	482	165	74	152	50	90	55
11.4453085000S	76-77	85	3	559	203	87	178	60	110	90
11.4453120000S	95-96	120	3 1/2	711	254	100	229	70	120	170
11.4453150000S	102	150	4	813	280	114	254	80	150	250

Blueprint

